



Villa Way

Wootton Fields, Northampton

oriordanbond
SALES & LETTINGS



Villa Way

Wootton Fields
NN4 6JH

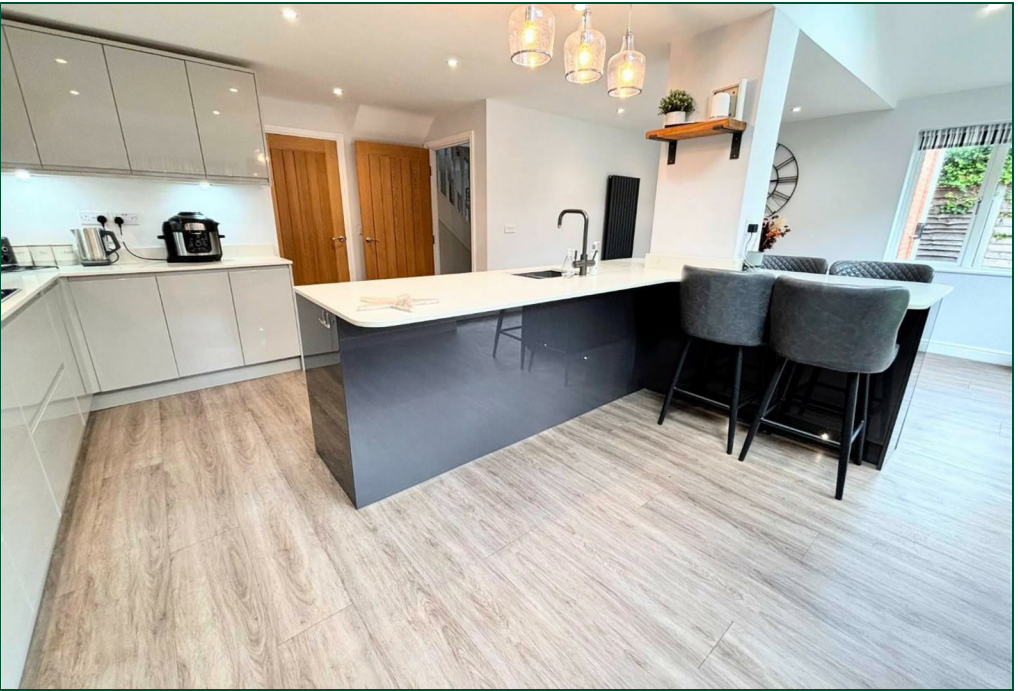
Price
£550,000

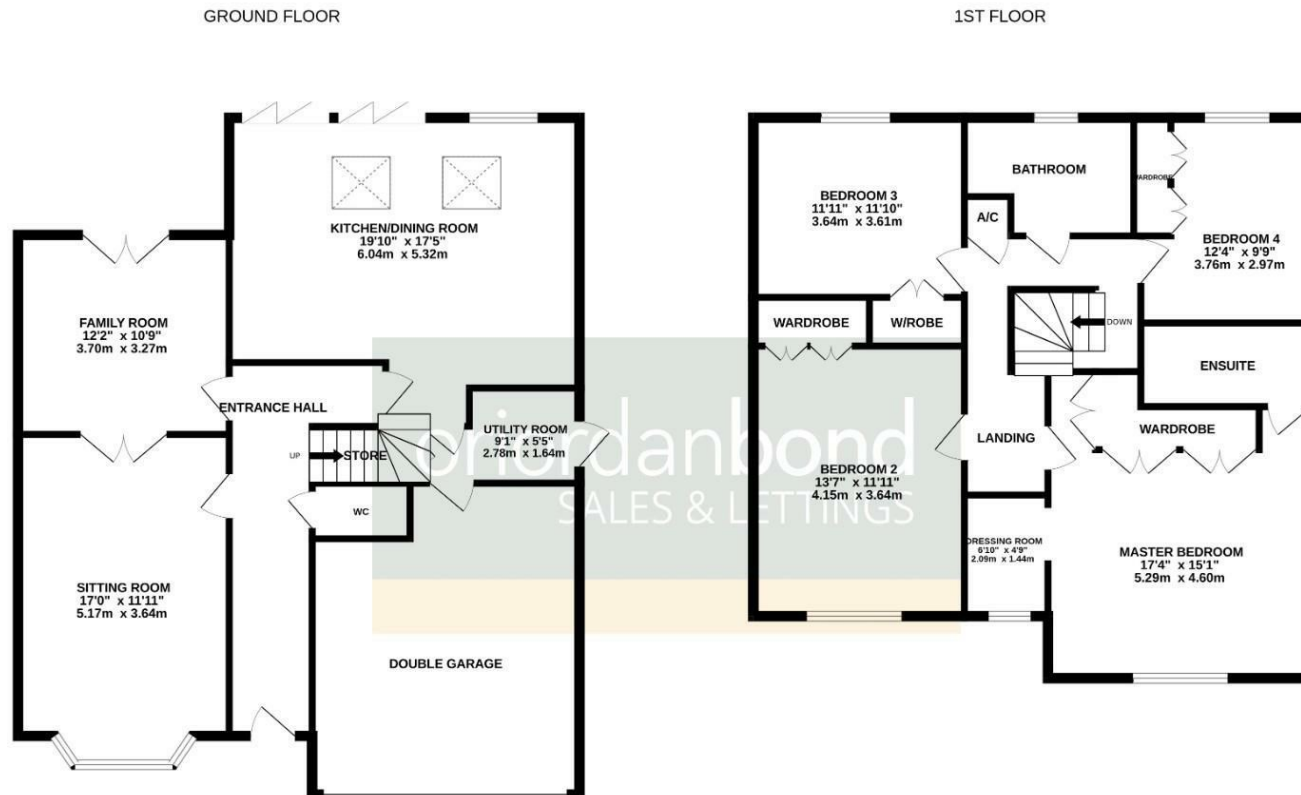
An immaculate extended four double bedroom detached family home situated in the sought after area of Wootton Fields. The property provides good access to outstanding schools, nearby amenities and transport links as well as Wootton Valley Country Park.

The accommodation comprises entrance hall, cloakroom/WC, sitting room, family room, extended re-fitted kitchen/dining room with electric Velux skylight windows, integrated appliances including double oven, microwave, dishwasher and wine chiller and bi-folding doors to the enclosed rear garden and access to a utility room. On the first floor are four double bedrooms and a four-piece family bathroom, with en-suite shower room and dressing area to the master bedroom. Outside is an enclosed rear garden with lawn and patio areas and a front garden with double width driveway providing off road parking leading to a double garage with electric door. Further benefits include gas radiator heating, uPVC double glazing and a limited onward chain. (A/1782/M)

- Immaculate extended four double bedroom detached
- En-suite and dressing area to master bedroom
- Extended re-fitted kitchen/dining room
- Gas radiator heating
- Enclosed rear garden
- Driveway and double garage with electric door







Additional information

- Council Tax Band: F
- Energy Efficiency Rating: D

Viewing

Viewing strictly by appointment – details below

Disclaimer

O'Riordan Bond Estate Agents Limited has not tested apparatus, equipment, fittings or services and so cannot verify they are in working order. The buyer is advised to obtain verification from their solicitor or surveyor.

O'Riordan Bond Grange Park Sales

01604 432007

grangepark@oriordanbond.co.uk

